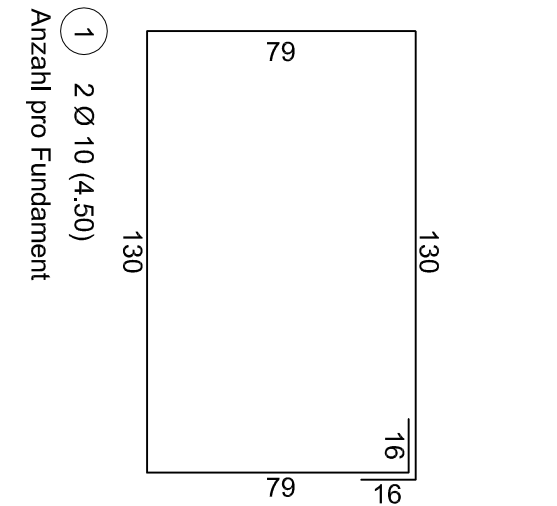
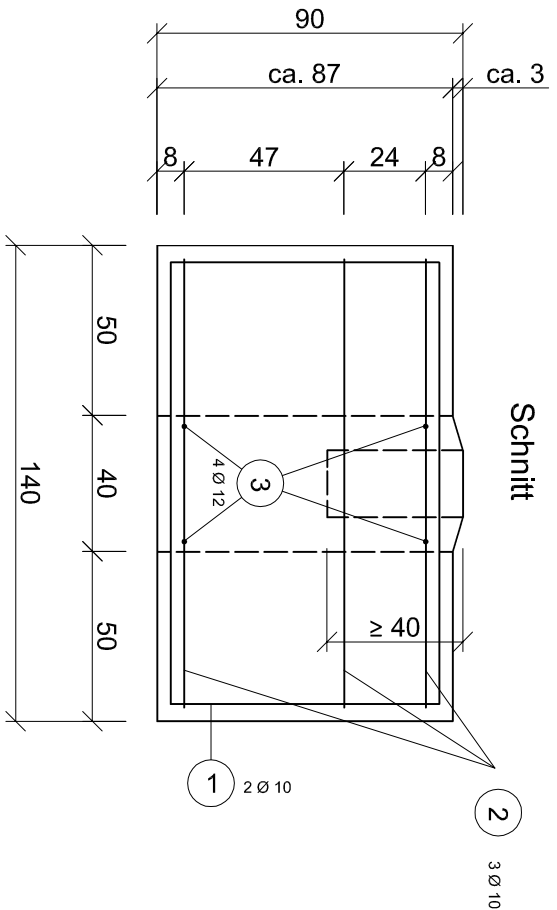
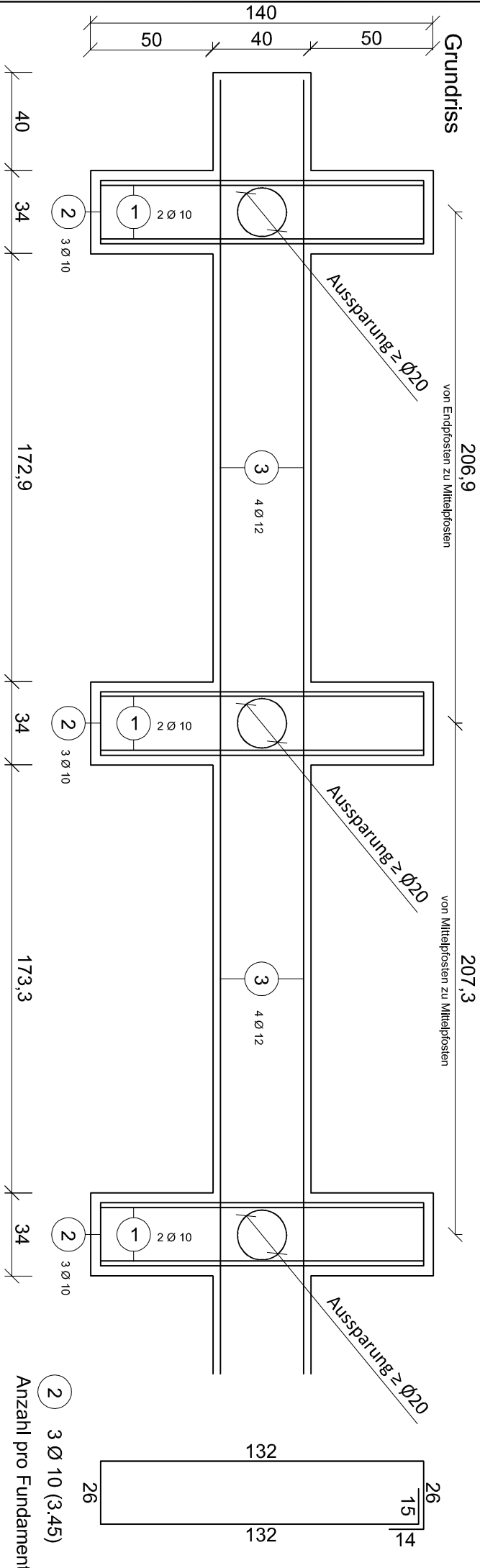


Fundamentplan für Schallschutz "Limes" mit Stahlpfosten

Höhe 250cm



Betonfestigkeitsklasse C20 / 25
Expositionsklasse XC2, XF1
Betondeckung 4,0cm

3 Ø 12 lfm
Stoßüberdeckung 80cm

2 3 Ø 10 (3,45)
Anzahl pro Fundament

1 2 Ø 10 (4,50)
Anzahl pro Fundament