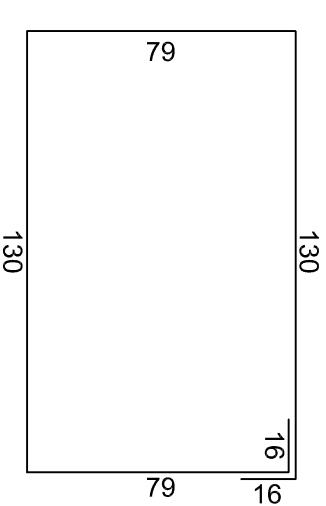
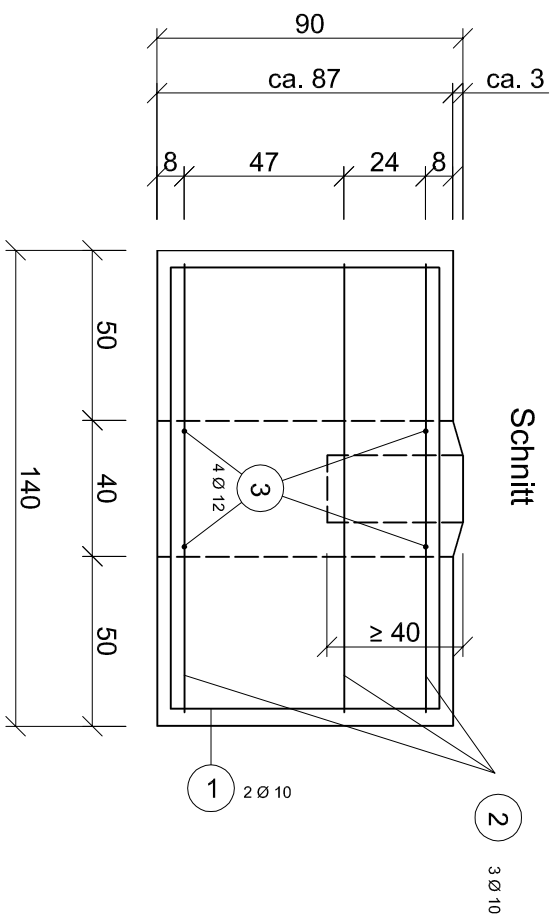
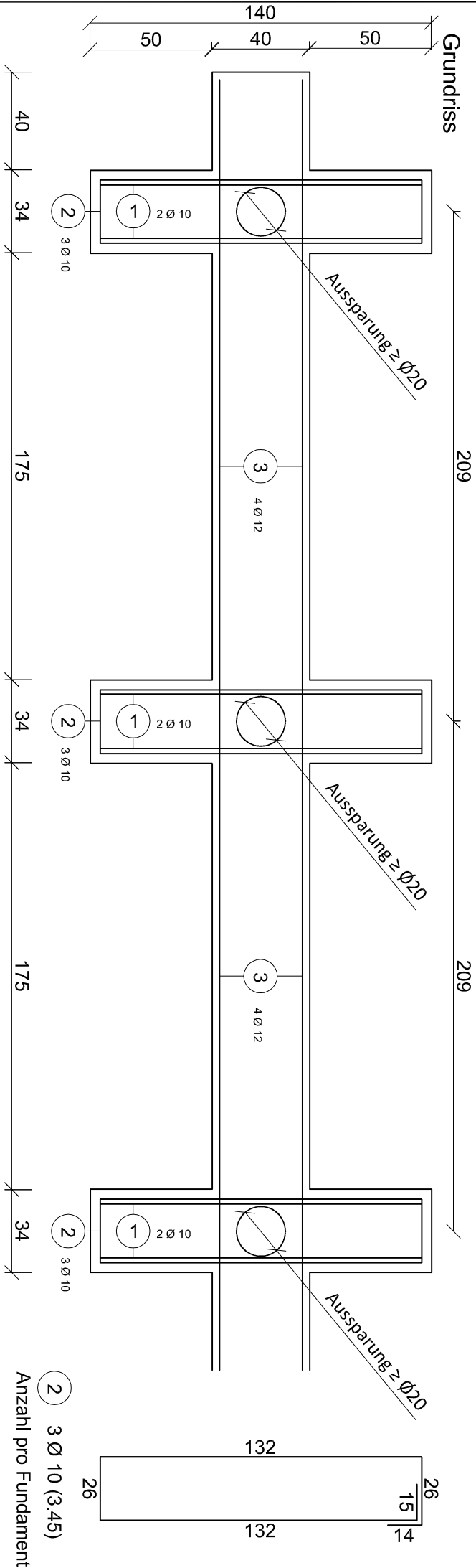


Fundamentplan für Schallschutz "Limes" mit Holzpfosten

Höhe 250cm



1 2 Ø 10 (4.50)
Anzahl pro Fundament

2 3 Ø 10 (3.45)
Anzahl pro Fundament

3 Ø 12 lfm
Stoßüberdeckung 80cm

Betonfestigkeitsklasse C20 / 25
Expositionsklasse XC2, XF1
Betondeckung 4,0cm